



Features:

800PSI/PN40

Investment Casting

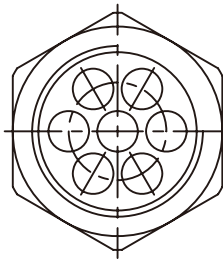
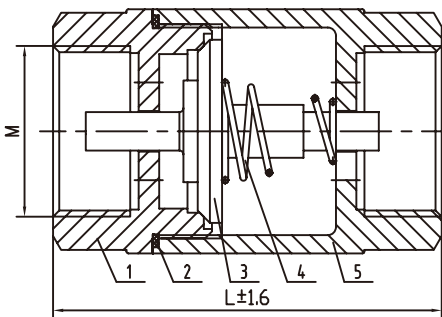
Sanitary Design

Thread: ASME B1.20.1 BS21.DIN2999/259,

ISO228-1, JIS B 0203,ISO7/1

Inspection Testing: API598,EN12266

Part List, Material and Dimension



No.	Part Name	Material
1	Cap	A105 / SS304 / SS316
2	Gasket	PTFE / RPTFE
3	Disc	SS304 / SS316
4	Spring	SS304 / SS316
5	Body	A105 / SS304 / SS316

Size		M	L
DN6	1/4"	1/4"	65
DN10	3/8"	3/8"	65
DN15	1/2"	1/2"	65
DN20	3/4"	3/4"	70
DN25	1"	1"	80
DN32	1-1/4"	1-1/4"	96
DN40	1-1/2"	1-1/2"	106
DN50	2"	2"	120